

Moctezuma: Aztec Ruler

24 September 2009 – 24 January 2010
Round Reading Room, British Museum, London WC1B 3DG, UK

List of objects proposed for protection under Part 6 of the Tribunals, Courts and Enforcement Act 2007 (protection of cultural objects on loan).

Lip Plug, Inv. 59.989

Gold and crystal, 62mm (width), 1350 - 1521 AD
Findspot: Coxcatlan, Estado de Puebla, 19th Century



Lent by: Museum fur Völkerkunde, Vienna

Provenance: Acquired 1897 from the collection of Philipp J. Becker
Ownership between 1933 – 1945: Museum fur Völkerkunde, Vienna

Publication: Aztecs, Royal Academy, London 2002, p.446, no.187

Blue stone pendant, Inv. 10.407

Stone Amethyst & Malachite, 12 x 31 x 10mm, 1350 - 1521 AD
Findspot: Mexico, 16th Century



Lent by: Museum fur Völkerkunde, Vienna

Provenance: Entered Imperial collections in 1880. Originally in the
collection of Ferdinand II, Archduke of Tyrol (1529-1595)
Ownership between 1933 – 1945: In Austrian National Collections

Publication: Aztecs, Royal Academy, London 2002, p.447-8, no.193

Portrait of Moctezuma

Oil on canvas, 1,850 x 1000mm, c. 1700
In Mexico since 18th century



Lent by: Collection Maille, Mexico City, Mexico

Provenance: In private collections since creation. Acquired by
Collection Maille 20th century. Collection Maille is a formally registered
collection with the National Institute of Anthropology and History, Mexico
1975, and have fulfilled the requirements of a registered collection
under that scheme.

Publication: Cuadriello, Jaime, *Los pinceles de la historia*, 1999

Biconical Cups, Inv. 10-646507 / 9



Ceramic, 500 x 180mm, c. 1509

Findspot: Empress Chapel, now Financial Records Library of Palacio Nacional, Mexico City, 1993

Lent by: Departamento de Salvamento Arqueologico, Mexico, Mexico City, Mexico

Provenance: In Mexican National Collections since excavation
Ownership between 1933 – 1945: not excavated

Publication: Solís Olguín, Felipe and Morales Gomez, David, *Rescate de un rescate: coleccion de objetos arqueologicos de El Volador*, Mexico City, 1991 p.123

Red cup, Inv. 10646459



Ceramic, 210 x 160mm, c. 1500

Findspot: Empress Chapel, now Financial Records Library of Palacio Nacional, Mexico City, 1993

Lent by: Departamento de Salvamento Arqueologico, Mexico, Mexico City, Mexico

Provenance: In Mexican National Collections since excavation

Publication: unpublished

Box, Inv. 10-223670 0/2



Stone, 230 x 243 x 243mm, 1325 - 1521 AD

Findspot: Tetzaco, Estado de Mexico, 19th Century

Lent by: Museo Nacional de Antropología, Mexico City, Mexico

Provenance: In Mexican National Collections since excavation
Ownership between 1933 – 1945: In Mexican National Collections

Publication: Galindo y Villa, Jesus, *Catalogo del Departamento de Arqueologia del Museo Nacional*, Mexico City, 1897 pp.48-49

Heart of green stone, Inv. 10-392930



Stone, 245 x 205 x 133mm, 1350 - 1521 AD

Findspot: Calle Republica de Venezuela No. 44, Mexico City, 1977

Lent by: Museo Nacional de Antropología, Mexico City, Mexico

Provenance: In Mexican National Collections since excavation

Publication: Dahlgren et al., *Corazon de Copil*, Mexico City, 1982



Cactus Tenoch, Inv. 10-220928

Stone, 970 x 280mm, 1325 -1521 AD
Findspot: Historic centre, Mexico City, 19th Century

Lent by: Museo Nacional de Antropología, Mexico City, Mexico

Provenance: From Alfredo Chevero's collection, Mexico, donated to national collections in 19th century

Ownership between 1933 – 1945: In Mexican National Collections

Publication: Easby, Elizabeth and Scott, John F. (eds.), *Before Cortes*, New York, 1970 fig.287

Cactus Tenoch (fragment), Inv. 10-46716



Stone, 290 x 370mm, c. 1430 - 1500 AD
Findspot: unknown, 19th century

Lent by: Museo Nacional de Antropología, Mexico City, Mexico

Provenance: From Alfredo Chavero's collection, Mexico, donated to national collections in 19th century

Ownership between 1933 – 1945: In Mexican National Collections

Publication: Barlow, Robert H., 'Tlatelolco, rival de Tenochtitlan', in *Obres de Robert H. Barlow*, Mexico City, 1987 pp.59-66



Male statue, Inv. 10-40607

Stone, 630 x 205 x 182mm, c. 1350 - 1521 AD
Findspot: Estado de Puebla, before 1930

Lent by: Museo Nacional de Antropología, Mexico City, Mexico

Provenance: Acquired 1930 by Mexican National Collections
Ownership between 1933 – 1945: In Mexican National Collections

Publication: *Aztecs*, Royal Academy, London 2002 p.410 no.36

Dedication Stone, Inv. 10-220919



Greenstone (diorite), 920 x 620 x 395mm, 1487 AD
Findspot: Mexico City, 19th Century

Lent by: Museo Nacional de Antropología, Mexico City, Mexico

Provenance: In Mexican National Collections since excavation
Ownership between 1933 – 1945: In Mexican National Collections

Publication: Ramírez, Jose Fernando, 'Description de cuatro lapidas monumentales...' in *Histroia de la Conquista de William H. Prescott*, Mexico City, 1864 pp.49-50



Fan with Feathers, Inv. 10-393455

Wood and feathers, 362 x 529 x 41mm, Handle c.1500, feathers 1999
Findspot: Tenochtitlan, 1940s

Lent by: Museo Nacional de Antropología, Mexico City, Mexico

Provenance: In Mexican National Collections since excavation
Ownership between 1933 – 1945: In Mexican National Collections

Publication: not published

Obsidian earspools, Inv. 10-77720 / 10-595066

Obsidian, 18 x 50mm
Findspot: Mexico City, excavated late 19th/early 20th century in course of construction of city infrastructure

Lent by: Museo Nacional de Antropología, Mexico City, Mexico

Provenance: In Mexican National Collections since excavation
Ownership between 1933 – 1945: In Mexican National Collections

Publication: unpublished

Green Stone Earspools, Inv. 10-594482, 10-594483



Stone, 1460 - 1521 AD
Findspot: Mexico, early 20th Century

Lent by: Museo Nacional de Antropología, Mexico City, Mexico

Provenance: In Mexican National Collections since excavation
Ownership between 1933 – 1945: In Mexican National Collections

Publication: not published

Head with Lip plug, Inv. 10-392909



Ceramic, 195 x 150 x 188mm, c. 1250 - 1521 AD
Findspot: from Tenochtitlan, date unknown, likely 20th century

Lent by: Museo Nacional de Antropología, Mexico City, Mexico

Provenance: formerly Martell Collection, given to MNA 20th century

Publication: *El imperio azteca*, exh. Cat. Guggenheim Museum, Bilbao, 2005 p.28



Green stone pendant, Inv. 10-594485

Green stone, 75 x 45 x 30mm, c. 1325-1521
Findspot: unknown, possibly Texacoco, Mexico, before 1920

Lent by: Museo Nacional de Antropología, Mexico City, Mexico

Provenance: In Mexican National Collections since excavation
Ownership between 1933 – 1945: In Mexican National Collections

Publication: Mena, Ramon, *Catalogo de la coleccion de objetos de jade*
Mexico City, 1927



Pendant with figure Xiuhtecuhtli, Inv. 10-8543

Gold, 420 x 380 x 20mm, c. 1470 - 1521 AD
Findspot: Historic centre, Mexico City, 1945

Lent by: Museo Nacional de Antropología, Mexico City, Mexico

Provenance: In Mexican National Collections since excavation

Publication: Solís Olgún, Felipe and Carmona, Martha, *El oro precolombino de Mexico*, Mexico City, 1995



Gold earring, bird head, Inv. 10-79577

Gold, 22 x 57mm, 800 - 1521 AD
Found Miahuatlán, Chinantla Baja, Oaxaca, before 1920

Lent by: Museo Nacional de Antropología, Mexico City, Mexico

Provenance: In Mexican National Collections since excavation
Ownership between 1933 – 1945: In Mexican National Collections

Publication: Saville, Marshall H., *The Goldsmith's Art in Ancient Mexico*,
New York, 1920



Gold Ring, Inv. 10-594809

Gold, 26 x 17mm, c. 1325 - 1521 AD
Findspot: Historic centre, Mexico City, date unknown (pre-1920)

Lent by: Museo Nacional de Antropología, Mexico City, Mexico

Provenance: In Mexican National Collections since found
Ownership between 1933 – 1945: In Mexican National Collections

Publication: Saville, Marshall H., *The Godsmith's Art in Ancient Mexico*,
New York, 1920



Pectoral, Inv. 10-9425

gold, 87 x 62 x 1mm, 1325-1521
Findspot: Calixtlahuaca, Estado de Mexico, date unknown

Lent by: Museo Nacional de Antropología, Mexico City, Mexico

Provenance: In Mexican National Collections since excavation

Publication: unpublished



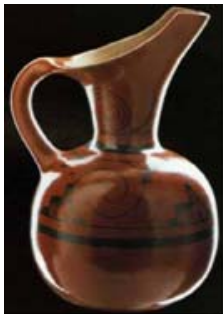
Nose ornament, Inv. 10-220922

Gold, 77 x 77 x 5mm, c. 1480
Found Foundations of Plaza de Constitución, Calle Escalerillas, Mexico City, c. 1978

Lent by: Museo Nacional de Antropología, Mexico City, Mexico

Provenance: In Mexican National Collections since excavation

Publication: Bastres, *Traabajos arqueologicos del centro*, Mexico City, 1979



Ceramic pulque jug (Texcoco), Inv. 10-78234

Ceramic, 297 x 176 x 180mm, c.1450 - 1500 AD
Findspot: Texcoco, Estado de Mexico, date unknown

Lent by: Museo Nacional de Antropología, Mexico City, Mexico

Provenance: In Mexican National Collections since excavation

Publication: Pasztory, Esther, *Aztec Art*, New York, 1983



Serpent Head, Inv. 10-81558

Stone, 555 x 555 x 640mm, c. 1507 AD
Findspot: Foundations of Palacio Nacional, Mexico City, 1929

Lent by: Museo Nacional de Antropología, Mexico City, Mexico

Provenance: In Mexican National Collections since excavation
Ownership between 1933 – 1945: In Mexican National Collections

Publication: Bernal, Ignacio, *Museo de Anthrologia de Mexico*, Mexico City, 1967 p.161 no.84

Serpent Tail with Maize Cobs, Inv. 10-220935



Basalt, 998 x 560 x 1380mm, c. 1500
Findspot: Foundations of Palacio Nacional, Mexico City, early 20th Century

Lent by: Museo Nacional de Antropología, Mexico City, Mexico,

Provenance: In Mexican National Collections since excavation
Ownership between 1933 – 1945: In Mexican National Collections

Publication: Pasztory, Esther, *Aztec Art*, New York, 1983 pp.234-235

**Polychrome Relief (Moctezuma's Palace),
Inv. 10-33560 / 10-333891 / 10-620967 / 10-333561 /
10-333562 / 10-333563 / 10-333892**



Stone and paint, 305 x 2334 x 0mm, c. 1500
Findspot: Templo Mayor, Ex Mercado del Volador, calles Venustiano Carranza y Pino Suarez, Historic Centre, Mexico City, 1920s

Lent by: Museo Nacional de Antropología, Mexico City, Mexico

Provenance: In Mexican National Collections since excavation
Ownership between 1933 – 1945: In Mexican National Collections

Publication: Solís Olguín, Felipe and Morales Gomez, David, *Rescate de un rescate: coleccion de objetos arqueologicos de El Volador*, Mexico City, 1991 pp.20-22, 303-06

2 Objects from the Ex Volador (A pair), Inv. 10-77820/10-3344



Ceramic, 288 x 144mm, c. 1507
Findspot: Templo Mayor, Ex Mercado del Volador, calles Venustiano Carranza y Pino Suarez, Historic Centre, Mexico City, 1936

Lent by: Museo Nacional de Antropología, Mexico City, Mexico

Provenance: In Mexican National Collections since excavation
Ownership between 1933 – 1945: In Mexican National Collections

Publication: Solís Olguín, *Tesoros arísticos del Museo Nacional de Antropología*, Mexico City, 1991

Object from the Ex Volador, Inv. 10-116785



Ceramic, 231 x 221mm, c. 1507
Findspot: Ex Plaza del Volador, Mexico City, c. 1936-7

Lent by: Museo Nacional de Antropología, Mexico City, Mexico

Provenance: In Mexican National Collections since excavation
Ownership between 1933 – 1945: In Mexican National Collections

Publication: Solís Olguín, Felipe and Morales Gomez, David, *Rescate de un rescate: coleccion de objetos arqueologicos de El Volador*, Mexico City, 1991 p.270

Censer, Inv. 10-78081



Ceramic, 305 x 295 x 0mm, 1400-1521
Findspot: Central plains, Estado de Puebla, first half of 20th century

Lent by: Museo Nacional de Antropología, Mexico City, Mexico

Provenance: In Mexican National Collections since excavation
Ownership between 1933 – 1945: In Mexican National Collections

Publication: Flores Gutierrez, 1991

Large Cholula Tripod dish, Inv. In 10-9817



Ceramic, 53 x 150 x 120mm, c. 1500 AD
Findspot: Cholula, Puebla, date unknown

Lent by: Museo Nacional de Antropología, Mexico City, Mexico

Provenance: In Mexican National Collections since excavation

Publication: Solís Olguín, Felipe and Morales Gomez, David, 'La ceramica policroma de Cholula, Puebla,' in *Miniguia*, Mexico City, 1992

Stone of Moctezuma with self sacrifice, Inv. 10-116583



Stone, 595 x 415 x 295mm, 1325 - 1521 AD
Findspot: Underneath Metro Line covering part of former Tenochtitlan, found after 1967

Lent by: Museo Nacional de Antropología, Mexico City, Mexico

Provenance: In Mexican National Collections since excavation

Publication: INAH, *Boletín*, 42 (1970) p.47 fig. 52

Incense burner, Inv. 10-1074



Ceramic, 238 x 94 x 625mm, 1325- 1521 AD
Findspot: Mexico City, excavated late 19th/early 20th century in course of construction of city infrastructure

Lent by: Museo Nacional de Antropología, Mexico City, Mexico

Provenance: In Mexican National Collections since excavation
Ownership between 1933 – 1945: In Mexican National Collections

Publication:



Monument of Tlaloc with Chihuitlzol, Inv. 10-136175

Stone, 670 x 390 x 280mm, 1459 or 1511 AD
Findspot: Mexico City, excavated late 19th/early 20th century in course of construction of city infrastructure

Lent by: Museo Nacional de Antropología, Mexico City, Mexico

Provenance: In Mexican National Collections since excavation
Ownership between 1933 – 1945: In Mexican National Collections

Publication: Solís Olguín, Felipe, *La escultura de Santa Cecilia Acatitlan*, Mexico City, 1976 p.6 no. 5



Quetzalcoatl with glyph, Inv. 10-220930

Stone, 210 x 440 x 450mm, c. 1519
Findspot: Mexico City, date unknown, likely early 20th century

Lent by: Museo Nacional de Antropología, Mexico City, Mexico

Provenance: In Mexican National Collections since excavation
Ownership between 1933 – 1945: Mexican National Collections

Publication: Umberger, Emily, *Aztec Sculptures, Hieroglyphs and History*, Columbia University, New York, 1981 p.94



Reed bundle, Inv. 10-220917

Basalt, 260 x 610 x 0mm, c. 1507 AD
Findspot: Foundations of Catedral Metropolitana, Mexico City, 1969

Lent by: Museo Nacional de Antropología, Mexico City, Mexico

Provenance: In Mexican National Collections since excavation

Publication: Pasztory, Esther, *Aztec Art*, New York, 1983



Teocalli of Sacred Warfare, Inv. 10-81548

Basalt, 1230 x 920 x 1000mm, 1507 AD
Found Foundations of the Palacio Nacional, Mexico City, before 1918

Lent by: Museo Nacional de Antropología, Mexico City, Mexico

Provenance: In Mexican National Collections since excavation
Ownership between 1933 – 1945: In Mexican National Collections

Publication: 'La Piedra del Sol y el primer capítulo de la historia de México', by Juan Enrique Palacios, in *Memorias de la Sociedad Científica 'Antonio Alzate'*, v.38, 1918



Churubusco (standard bearer), Inv. 10-81575

Stone, 800 x 335 x 170mm, 1325-1521
Findspot: Apapaxco, Churubusco, Mexico City, early 20th century

Lent by: Museo Nacional de Antropología, Mexico City, Mexico

Provenance: In Mexican National Collections since excavation
Ownership between 1933 – 1945: Mexican National Collections

Publication: unpublished



Male sculpture (standard bearer), Inv. 10-220926

Stone, 820 x 300 x 225mm, c. 1500 AD
Findspot: Mexico City, first half of 20th Century

Lent by: Museo Nacional de Antropología, Mexico City, Mexico

Provenance: In Mexican National Collections since excavation
Ownership between 1933 – 1945: In Mexican National Collections

Publication: *Aztecs*, Royal Academy, London 2002 p.409 no.34



Procession of Warriors, Inv. 10-1155

Basalt, 650 x 1190 x 1610mm, c. 1510
Findspot: Plaza de la Constitución, Mexico City, late 19th/early 20th century in course of construction of city's infrastructure

Lent by: Museo Nacional de Antropología, Mexico City, Mexico

Provenance: In Mexican National Collections since excavation
Ownership between 1933 – 1945: Mexican National Collections

Publication: Bilbao 2005, p.34 no.93



Head of Eagle Warrior, Inv. 10-0000094

Stone, 380 x 320 x 260mm, c. 1420 - 1521
Findspot: Texcoco, Mexico, 19th Century

Lent by: Museo Nacional de Antropología, Mexico City, Mexico

Provenance: In Mexican National Collections since excavation
Ownership between 1933 – 1945: In Mexican National Collection

Publication: Toscano, Salvador, *Arte precolombino de Mexico y de la America Central*, Mexico City, 1944 pp.114-115 pl.172

Aztecs, Royal Academy, London 2002, p.451



Jaguar Warrior, Inv. 10-81553

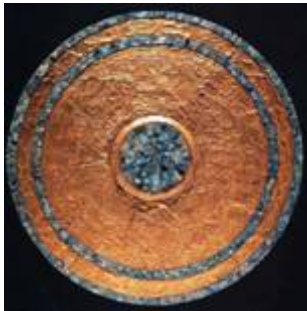
Stone, 780 x 565 x 530mm, c. 1500

Findspot: Mexico City, excavated late 19th/early 20th century in course of construction of city infrastructure

Lent by: Museo Nacional de Antropología, Mexico City, Mexico

Provenance: In Mexican National Collections since excavation
Ownership between 1933 – 1945: In Mexican National Collections

Publication: Matos Higuera 1979 p.235



Mixtec disc, Inv. 10-4594

Gold, 208mm (diam.), c.1300 AD

Findspot: Tomb III of Zaachila (Teozapotla), Oaxaca, 1971

Lent by: Museo Nacional de Antropología, Mexico City, Mexico

Provenance: In Mexican National Collections since excavation

Publication: Solís Olguín and Camona 2004 pp.113-115



Spondylous shell ornament, Inv. 10-594923

shell, 65 x 38 x 12mm, c. 1325 - 1521 AD

Findspot: unknown, possibly Mexico City, first half of 20th Century

Lent by: Museo Nacional de Antropología, Mexico City, Mexico

Provenance: In Mexican National Collections since excavation
Ownership between 1933 – 1945: In Mexican National Collections

Publication: *Aztecs*, Royal Academy, London 2002, p.447



Conch shell collar, Inv. 10-9686

shell, 158 x 84 x 32mm, date

Findspot: Southeast of Catedral Metropolitana, Mexico City, 1940

Lent by: Museo Nacional de Antropología, Mexico City, Mexico

Provenance: In Mexican National Collections since excavation
Ownership between 1933 – 1945: In Mexican National Collections

Publication: unpublished

Ingot, Inv. 10-220012

Gold, 54 x 262 x 14mm, c. 1519 AD
Findspot: Ave. Hidalgo, Mexico City, 1982



Lent by: Museo Nacional de Antropología, Mexico City, Mexico

Provenance: In Mexican National Collections since excavation

Publication: *Aztecs*, Royal Academy, London 2002

Macuahuitl (obsidian sword)

wood and obsidian, 120 x 800mm
Findspot: Mexico City, excavated late 19th/early 20th century in course of construction of city infrastructure

Lent by: Museo Nacional de Antropología, Mexico City, Mexico

Provenance: In Mexican National Collections since excavation
Ownership between 1933 – 1945: In Mexican National Collections

Publication:

Featherwork replica shield, Inv. 10-92265

Wood and feathers, 20th century replica



Lent by: Museo Nacional de Historia, Castillo de Chapultepec, Mexico City, Mexico

Provenance: Made for MNH, 20th century

Publication: unpublished

Breastplate (Alvarado), Inv. 10-233988

Metal, 360 x 330mm, 16th Century, Spanish?
In Mexico since 16th century



Lent by: Museo Nacional de Historia, Castillo de Chapultepec, Mexico City, Mexico

Provenance: Part of MNH founding collections, 1939, part of public or royal collections prior to 1939

Publication: Martínez Chiñas 1994 p.213

Spanish Banner/Standard, Inv. 10-128950



Painted textile, 2980 x 2460mm, 16th Century, Spanish?
In Mexico since 16th century

Lent by: Museo Nacional de Historia, Castillo de Chapultepec, Mexico City, Mexico

Provenance: In Mexican National Collections since before 1896
Ownership between 1933 – 1945: In Mexican National Collections

Publication: García Icazbalceta, 1896 vol ii, pp44ff; Lomnitz 2006

Horse armour, Inv. 10-92271



Metal, early 16th Century, Spanish?
In Mexico since 16th century

Lent by: Museo Nacional de Historia, Castillo de Chapultepec, Mexico City, Mexico

Provenance: Part of MNH founding collections, 1939, part of public or royal collections prior to 1939

Publication: Benavente, Toribio de Benavente, *Historia de los indios de la Nueva Espana*, Mexico City, 1941 pp.161-62

Screen, Inv. 109.2



Oil on Canvas, 1923 x 5410mm, late 17th - early 18th Century

Lent by: Museo Nacional de Historia, Castillo de Chapultepec, Mexico City, Mexico

Provenance: Acquired by Mexican National Collections in 1859
Ownership between 1933 – 1945: In Mexican National Collections

Publication: Vargaslugo 1994 pp.32-34

Eagle Cauhxicalli, Inv. 10-252747



Basalt, 820 x 1390 x 760mm, c. 1502
Findspot: Casa del marques del Apartado, Argentina no.12, Mexico City, Mexico City, 1984

Lent by: Museo del Templo Mayor, Mexico City, Mexico

Provenance: In Mexican National Collections since excavation

Publication: *Aztecs*, Royal Academy of Art, London 2002



Stone urn (white and black), Inv. 10-264431 / 10-220307

Stone, 237 x 70 x 9.6mm, c.1390 AD
Findspot: Offering 39, Templo Mayor, Mexico City, 1979

Lent by: Museo del Templo Mayor, Mexico City, Mexico

Provenance: In Mexican National Collections since excavation

Publication: Matos Moctezuma, Eduardo, *Vida y muerte en el Templo Mayor*, 1986 pp.80-81, 92



Funary Urn red Clay (IV B Axayacatl), Inv. 10-168823 - o/2

Ceramic, 329 x 175mm, c. 1469 AD
Findspot: Offering 14, Huitzilopochli building, stage IV of Templo Mayor, Mexico City, 1978

Lent by: Museo del Templo Mayor, Mexico City, Mexico

Provenance: In Mexican National Collections since excavation

Publication: *Aztecs*, Royal Academy of Art, London 2002



Copper Bells, Inv. 10-2515460/18

Copper, 18 x 0 x 34mm, date unknown
Findspot: Mexico City, excavated late 19th/early 20th century in course of construction of city infrastructure

Lent by: Museo del Templo Mayor, Mexico City, Mexico

Provenance: In Mexican National Collections since excavation
Ownership between 1933 – 1945: In Mexican National Collections

Publication: unpublished



Gold / silver bells necklace, Inv. 10-262491 0/39

Gold / silver, c. 1469
Findspot: Offering 3 of Templo Mayor, Mexico Cit, 1978

Lent by: Museo del Templo Mayor, Mexico City, Mexico

Provenance: In Mexican National Collections since excavation

Publication: López Luján, Leonardo, *The Offerings of the Temple Mayor of Tenochtitlan*, 2005 pp.257-258

Two flutes, Inv. 10-252480 / 10-253047



Ceramic, c. 1486-1520 AD
Findspot: Offering 84, and offering 89, Templo Mayor, Mexico City, 1981-2

Lent by: Museo del Templo Mayor, Mexico City, Mexico

Provenance: In Mexican National Collections since excavation

Publication: Both, Arnd Adje, *Aerofonos mexicas de las ofrendas del recinto sagrado de Tenochtitlan*, 2005 pp.129-39, 279-81;

Tlaloc from Guerrero, Inv. 10-162938



Stone, 410 x 105 x 120mm, c. 1200 - 1521 AD
Findspot: West façade of Templo mayor, 1978

Lent by: Museo del Templo Mayor, Mexico City, Mexico

Provenance: In Mexican National Collections since excavation

Publication: López Luján, Leonardo, *The Offerings of the Temple Mayor of Tenochtitlan*, 2005 pp. 254-56

Necklace, Inv. 10-2647550/172



Green Stone, date unknown
Findspot: Mexico City, excavated Temple Mayor in course of archaeological project 1978-.

Lent by: Museo del Templo Mayor, Mexico City, Mexico

Provenance: In Mexican National Collections since excavation
Ownership between 1933 – 1945: In Mexican National Collections

Publication: unpublished

Greenstone Pieces, Inv. 10-262491 0/39



Greenstone, date unknown
Findspot: Mexico City, excavated Temple Mayor in course of archaeological project 1978-.

Lent by: Museo del Templo Mayor, Mexico City, Mexico

Provenance: In Mexican National Collections since excavation

Publication: unpublished



Spondylous shell, Inv. 10-168752-1/2

shell, 110 x 140 mm, unknown date

Lent by: Museo del Templo Mayor, Mexico City, Mexico, March 1980
Findspot: Offering 41, Templo Mayor, Mexico City

Provenance: Excavated and then entered into MTM collections

Publication: unpublished



Spondylous shell, Inv. 10-168752-2/2

shell, 120 x 120 mm, unknown date

Findspot: Offering 41, Templo Mayor, Mexico City, March 1980

Lent by: Museo del Templo Mayor, Mexico City, Mexico

Provenance: Excavated and then entered into MTM collections

Publication: unpublished

Mother of pearl shell pieces, Inv. 10-263958, Inv. 10-252242,

shell, average 60 x 60 mm, unknown date

Findspot: Valve: Offering 39, Dec. 1979; Disc: Offering 70, March 1981; Pendant: Offering 22, April 1979, in Templo Mayor, Mexico City



Lent by: Museo del Templo Mayor, Mexico City, Mexico

Provenance: Excavated and then entered into MTM collections

Publication: unpublished



Moctezuma's Palace reworked fragment with Coat of Arms, Inv. 10-264702 0/3

Stone, 1600 x 820 x 270mm, 18th Century

Findspot: Palacio Nacional, Mexico City, 1992

Lent by: Museo del Templo Mayor, Mexico City, Mexico

Provenance: Excavation form Urban Archaeology Programme of the Museo del Templo Mayor

Ownership between 1933 – 1945: not excavated

Publication: unpublished



Tomb materials:

2 fan-shaped ornaments, 1 headpiece, 6 gold bells, 1 nose plug, 2 long bones

Gold

Find spot: Mexico City, 2007

Lent by: Museo del Templo Mayor, Mexico City, Mexico

Provenance: In Mexican National Collections since excavation

Publication: not published



Codice Moctezuma, Inv. 10-9686, replica

paper, 1200 x 450 mm, 20th century replica

Lent by: Museo Regional Cuauhnahuac, Mexico City, Mexico

Provenance: Replica created for CUAH, 20th century

Publication: unpublished

Sword, Inv. 10-422029

Steel, 1080 x 140mm, c. 16th Century

Lent by: Museo Nacional del Virreinato, Mexico City, Mexico

Provenance: In Mexico since 16th c.; part of MNV founding collection, 1964; previously part of Colegio Noviciado de San Francisco Javier collection, nationalised in 1933

Ownership between 1933 – 1945: Museum National collection since 1933

Publication: unpublished



Snake / Baptismal Font, Inv. 10-544945

Stone, 350 x 1350mm, c. 1521

Findspot: Mexico, used throughout 16th Century

Lent by: Museo Nacional del Virreinato, Mexico City, Mexico

Provenance: used throughout 16th Century, then transferred to Mexican National Collections, precise date unknown

Ownership between 1933 – 1945: In Mexican National Collections

Publication: Fernández, Miguel Angel, et al, *Iris and the Feathered serpent*, Monterrey, 2007 p.357

Arrow bundle, Inv. 21 Pj.9



Stone, 330 x 230 x 140mm, c. 1507
Findspot: unknown, probably found in late 19th century

Lent by: Colección Fundación Televisa, Mexico City, Mexico

Provenance: Colección Fundación Televisa is a formally registered collection with the National Institute of Anthropology and History, Mexico 1975, and has fulfilled the requirements of a registered collection under that scheme.

Publication: Reyero, Manuel, *Coleccion Prehispanica Fundacion Cultural Televisa*, Paris, 1978 pp.150-52

Incense burner (1), Inv. 10646584



Ceramic, c. 1500 AD
Findspot: Empress Chapel, now Financial Records Library of Palacio Nacional, Mexico City, 1993

Lent by: Departamento de Salvamento Arqueologico, Mexico, Oaxaca, Mexico

Provenance: In Mexican National Collections since excavation

Publication: unpublished

Pair of gold circular ear spools, Inv. 10-186 / 10-187



Gold, c. 1500
Findspot: Tomb III, burial 2, Coixtlahuaca, Oaxaca, early 20th century

Lent by: Museo de Antropología e Historia del Estado de México, Oaxaca, Mexico

Provenance: In Mexican National Collections since excavation
Ownership between 1933 – 1945: In Mexican National Collections

Publication: Solís Olguín, Felipe and Carmona, Martha, *El oro precolombino de Mexico*, Mexico City, 1995



Drum, Inv. A-362300 / 10-102959

Wood, 980 x 520mm, c. 1500 AD
Findspot: Malinalco, in use by local community until 1894

Lent by: Toluca Museum, Toluca, Mexico

Provenance: Acquired 1894
Ownership between 1933 – 1945: In Mexican National Collections

Publication: unpublished

Fisherman's treasure, Inv. 10-213113,



Gold, 70 x 48 x 17mm, c. 1200 - 1521 AD
Findspot: Gulf of Mexico, 20 km north of Puerto de Veracruz, 1976

Lent by: Baluarte de Santiago, Veracruz, Veracruz, Mexico

Provenance: In Mexican National Collections since excavation

Publication: Ortiz Ceballos, Ponciano and Torres, G. Manuel, 'Dictamen judicial sobre las joyas de Rio Medio,' Xalapa, 1978

Fisherman's treasure, Inv. 10-213110



Gold, 80 x 28 x 10mm, c. 1200 - 1521 AD
Findspot: Gulf of Mexico, 20 km north of Puerto de Veracruz, 1976

Lent by: Baluarte de Santiago, Veracruz, Veracruz, Mexico

Provenance: In Mexican National Collections since excavation

Publication: Ortiz Ceballos, Ponciano and Torres, G. Manuel, 'Dictamen judicial sobre las joyas de Rio Medio,' Xalapa, 1978

Fisherman's treasure



Gold, c. 1200 - 1521 AD
Findspot: Gulf of Mexico, 20 km north of Puerto de Veracruz, 1976

Lent by: Baluarte de Santiago, Veracruz, Veracruz, Mexico

Provenance: In Mexican National Collections since excavation

Publication: Ortiz Ceballos, Ponciano and Torres, G. Manuel, 'Dictamen judicial sobre las joyas de Rio Medio,' Xalapa, 1978

Fisherman's treasure



Gold, c. 1200 - 1521 AD
Findspot: Gulf of Mexico, 20 km north of Puerto de Veracruz, 1976

Lent by: Baluarte de Santiago, Veracruz, Veracruz, Mexico

Provenance: In Mexican National Collections since excavation

Publication: Ortiz Ceballos, Ponciano and Torres, G. Manuel, 'Dictamen judicial sobre las joyas de Rio Medio,' Xalapa, 1978

Fisherman's treasure



Gold, c. 1200 - 1521 AD
Findspot: Gulf of Mexico, 20 km north of Puerto de Veracruz, 1976

Lent by: Baluarte de Santiago, Veracruz, Veracruz, Mexico

Provenance: In Mexican National Collections since excavation

Publication: Ortiz Ceballos, Ponciano and Torres, G. Manuel, 'Dictamen judicial sobre las joyas de Rio Medio,' Xalapa, 1978



Stone of Moctezuma, Inv. 1990.21

Stone, 228 x 673 x 577mm, 1503 AD
Findspot: Mexico City, c. early 1960s

Lent by: The Art Institute of Chicago, Chicago, USA

Provenance: Purchased in 1990 from the Time Museum, Rockford, Illinois; private collection, Los Angeles, 1971.

Ownership between 1933 – 1945: not excavated

Publication:



Standing Man with Cacao, Inv. 40.16

Stone, 362 x 178 x 191mm, 1440 - 1521
Findspot: Amatlan, Mexico, date unknown

Lent by: Brooklyn, New York, USA

Provenance: Amatlan, Veracruz; purchased from G.M. Echaniz, Mexico City, 1940

Ownership between 1933 – 1945: Brooklyn Museum from 1940; in Mexico prior to 1940

Publication: *Aztecs*, Royal Academy of Arts, 2002, London



Huastec Shell pendant, Inv.

Shell, 37mm (width), 1440 - 1521
Findspot: Veracruz, Mexico, date unknown

Lent by: Brooklyn, New York, USA

Provenance: A piece exchanged by Charles L. Morley, New York, 1948, for 2 gold ornaments from Costa Rica

Ownership between 1933 – 1945: not known, thought to be in Mexico

Publication: unpublished



Necklace, Inv. PC.B.103

Gold, 28.6 x 12.7 x 6.44mm, 1350-1521 AD
Findspot: Mexico, date unknown

Lent by: Dumbarton Oaks, Washington DC, USA

Provenance: Donated by Robert Wood Bliss, 1962. Purchased from Earl Stendahl, Los Angeles (dealer) by Robert Wood Bliss, 1960.

Ownership between 1933 – 1945: not known, thought to be in Mexico

Publication: unpublished



Mask, Inv. PC.B.072

Stone, 184 x 162 x 89mm, 1502-1520 AD

Lent by: Dumbarton Oaks, Washington DC, USA

Provenance: Purchased from Earl Stendahl, Los Angeles (dealer), by Robert Woods Bliss, 1948. Robert Woods Bliss Collection of Pre-Columbian Art, Washington, DC, 1948-1962.

Ownership between 1933 – 1945: Purchased from Earl Stendahl, Los Angeles (dealer), by Robert Woods Bliss, 1948. Robert Woods Bliss Collection of Pre-Columbian Art, Washington, DC, 1948-1962.

Publication: <http://museum.doaks.org/Obj23091?sid=178&x=25599#>



Xiucatl, Inv. PC.B.069

Stone, 435 x 454 x 0mm, date

Lent by: Dumbarton Oaks, Washington DC, USA

Provenance: Purchased from William Spratling by Robert Woods Bliss, 1940. Robert Woods Bliss Collection of Pre-Columbian Art, Washington, DC, 1940-1962.

Ownership between 1933 – 1945: Robert Woods Bliss Collection of Pre-Columbian Art, Washington, DC

Publication: <http://museum.doaks.org/Obj23090?sid=180&x=25795#>
